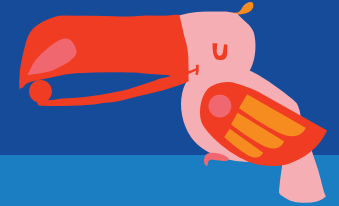


Welcome to
Silly Street



HOW to PLAY

in 3 easy steps

1. One mover per player on first space.



2. On your turn, draw a card & do what the card says.

3. First player to reach the end of Silly Street wins! And leads the group in a dance party!

THANKS FOR PLAYING!

A BIT MORE DETAIL:

- 1 Assemble the puzzle game board.
- 2 Each player should choose a wooden mover and place it on the first space on the board. Place the stack of cards face down next to the game board.
- 3 Youngest player goes first. When it's your turn, choose one card from the pile and do what it says! With gusto & enthusiasm! If you complete the card & do a good job, then...
- 4 Move the number of spaces indicated by the card. But stay on your toes! Some cards are *contests*, some cards let YOU decide who moves, and some cards indicate that OTHER players move...this is how you build Character!
- 5 Player to the left goes next! And so on until...

To Win: First player to reach the end of Silly Street WINS! The illustrious winner gets to lead the group in a RAGING dance party. Disco!

Tiny note, literally...Say you land on a spot that renders you stuck for a turn. You must honor this space EVEN if you so happen to win a contest. So, simply move forward, but still skip your next turn. No complaints, buddy! Those are the rules. - The management



a note for the GROWN-UPS:

Silly Street is riddled with teaching moments. If you catch an opportunity, point out something AH-MAZING that a kiddo did. It'll help Character Skills sink in.

For more on Silly Street and building Character, visit playsillystreet.com